

A Patient's Guide to **Quadrilateral Space Syndrome**



©MMG 2003



Alpine Physical Therapy
Three Locations
In North, South, and Downtown Missoula
Missoula, MT 59804
Phone: 406-251-2323 Fax: 406-251-2999

Alpine *Physical Therapy*[™] **Alpine Physical Therapy**



Thank you for taking the time to explore our web office. Discover all we have to offer. We hope you will find the time spent on our website rewarding and informative.

At Alpine Physical Therapy, we are dedicated to providing ways for those we serve to access the information needed to make informed decisions about healthcare in orthopedics and sports medicine.

We encourage you to explore this site and learn more about our practice, our facilities, and your treatment options. Make the most of this informative section of our site. You will find educational materials to help you understand orthopedic problems and your best options for treatment.

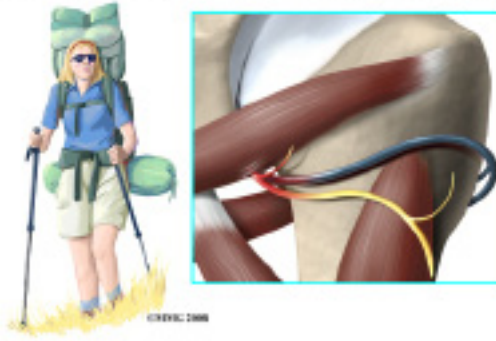
Alpine Physical Therapy . . .

Change Life Through Movement!



Alpine Physical Therapy
Three Locations
In North, South, and Downtown Missoula
Missoula, MT 59804
Phone: 406-251-2323 Fax: 406-251-2999
Info@AlpinePTmissoula.com
<http://www.AlpinePTmissoula.com>

Shoulder Quadrilateral Space Syndrome



Introduction

Quadrilateral space syndrome (QSS) happens when the axillary nerve is compressed, or injured in the back of the shoulder. Sometimes the symptoms are caused by the compression of an artery in the same area.

Quadrilateral space syndrome usually happens from overuse, especially with overhead sports like throwing and swimming. The syndrome can also be caused by an injury, like a shoulder dislocation.

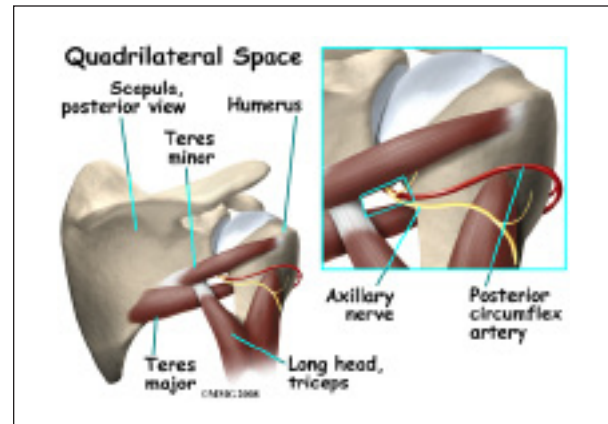
This document will help you understand:

- what parts of the shoulder are involved
- what causes this condition
- how doctors diagnose the condition
- what treatment options are available

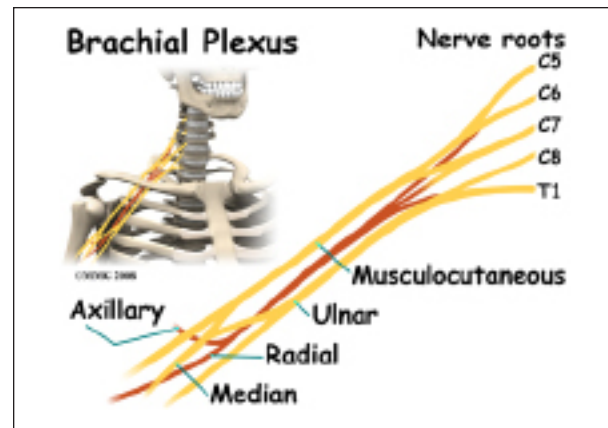
Anatomy

What parts of the shoulder are involved?

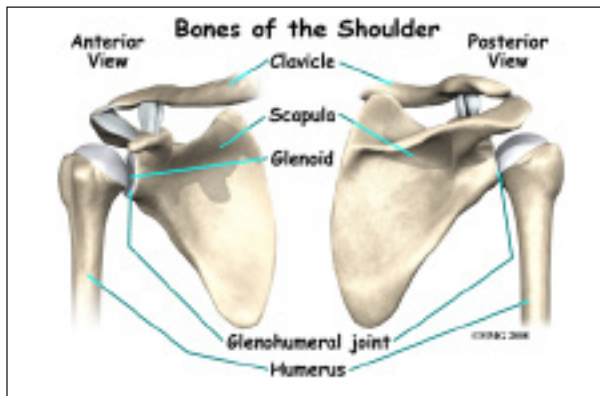
A *quadrilateral* is a four-sided shape. The *quadrilateral space* of the shoulder is in the upper back, where the shoulder meets the body. Three of the sides of the quadrilateral are formed by muscles. The top of the quadrilateral is bordered by a muscle called the *teres minor*. The *teres major* muscle forms the bottom border. Part of the *triceps muscle* forms the inside border. The long bone of the upper arm, called the *humerus*, makes up the outer border.



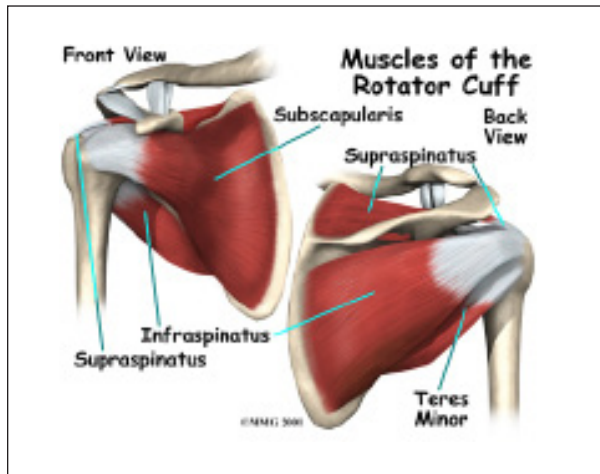
In addition to these muscles, the *axillary nerve* and the *posterior circumflex humeral artery* are in the quadrilateral space. When either the nerve or the artery is compressed or injured in this area it can cause problems such as *quadrilateral space syndrome*.



The axillary nerve is considered a *peripheral nerve*. There are several peripheral nerves in the shoulder that can be injured. The spinal cord in the neck, or cervical area, has branches that are called *nerve roots*. The nerve roots in the neck come together to form a large peripheral nerve called the *brachial plexus*. The axillary nerve is one of the branches off the brachial plexus. The axillary nerve is mainly formed from the fifth (C5) and sixth (C6) cervical nerve roots. The axillary nerve gives strength to the teres minor muscle and the deltoid muscle. It gives sensation to the shoulder joint.



The shoulder joint is also known as the *glenohumeral joint*. It is a ball and socket joint. The *glenoid* is the cup portion of the shoulder joint. The upper end of the humerus forms the ball portion.



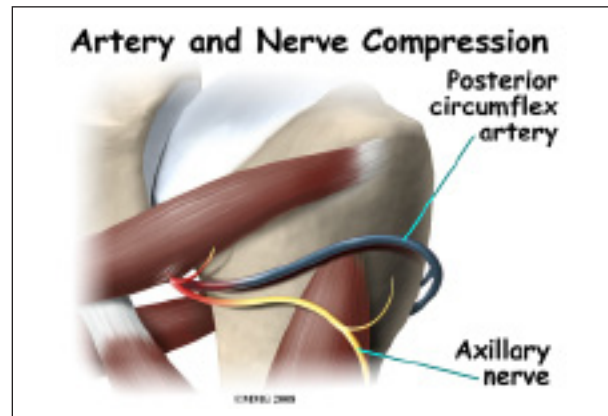
The shoulder joint is supported by many muscles. The most *famous* are the four rotator cuff muscles. They combine at the shoulder to form a thick cuff. They are also referred to as the *SITS* muscles. Each letter stands for one of the rotator cuff muscles; *supraspinatus*, *infraspinatus*, *teres minor*, and *subscapularis*. Sometimes injury to the quadrilateral space is mistaken as rotator cuff injury.

Causes

What causes this condition?

Repetitive stress or overuse is a major cause of quadrilateral space syndrome. Some of the more common causes of overuse are seen in

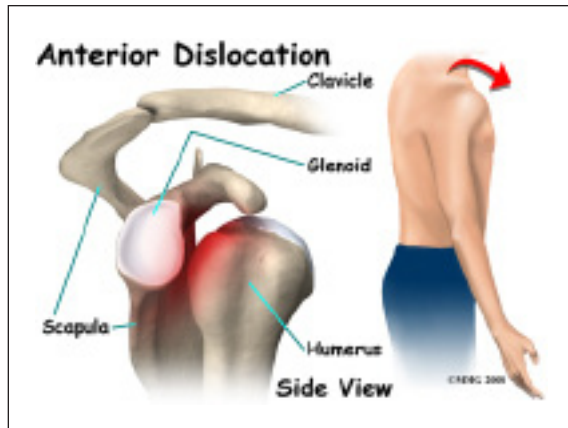
overhead sports like throwing and swimming. Children specializing in certain sports at early ages, have increased risk of getting quadrilateral space syndrome. Sometimes poor training techniques are to blame. Bands of extra fibers are usually what cause the compression of the axillary nerve, or the small artery in the quadrilateral space.



There are varying degrees of nerve injury. Most commonly, injury to the axillary nerve is a more mild form of injury called *neuropraxia*. This means that it typically recovers fully. The axillary nerve is very short, so even a severe injury can heal rather quickly.



An acute axillary nerve injury can also happen from carrying a heavy backpack. The misuse of crutches can also cause compression of the nerve.



The most common traumatic injury that causes quadrilateral space syndrome (QSS) is shoulder dislocation. Some reports show that quadrilateral space syndrome can happen 10 to 60 percent of the time after shoulder dislocation. There is a greater risk depending on the type of dislocation. A blunt force injury to the back of the shoulder can also cause quadrilateral space syndrome.

Symptoms

What does quadrilateral space syndrome feel like?



Symptoms of quadrilateral space syndrome usually include vague shoulder pain, numbness or tingling in the arm, and tenderness to pressure over the area of the quadrilateral space. A dull ache in the shoulder may worsen when the arm is moved overhead repeatedly.

Weakness and instability can sometimes be noted. The diagnosis of quadrilateral space

syndrome is often missed since symptoms can be similar to other shoulder problems.

Often there will be wasting of the teres minor muscle, and sometimes the deltoid muscle.

Subluxation (instability) of the glenohumeral joint is sometimes noted as well.

Diagnosis

How will my doctor diagnose this condition?

Your doctor will complete a history and physical examination.

Your doctor will ask questions about activity, possible traumatic injury, and the symptoms you are having. The physical examination usually includes evaluating range of motion, strength testing, checking reflexes and sensation. During this examination pressure will be applied over various areas of the shoulder to see where it may be painful.

Weakness and instability can sometimes be noted. The diagnosis of quadrilateral space syndrome is often missed since symptoms can be similar to other shoulder problems.

Often there will be wasting of the teres minor muscle, and sometimes the deltoid muscle.

Your doctor may want you to have some special tests done in order to better evaluate what is causing your problems.

Electromyogram (EMG) is a valuable tool in the diagnosis of quadrilateral space syndrome (QSS) and other peripheral injuries around the shoulder. The doctor will place small needle electrodes into various muscles to see how well they are functioning. Since different nerves make different muscles work, it helps to narrow down where the problem is coming from.

Magnetic resonance imaging (MRI) scans can sometimes identify the muscle wasting of the teres minor and deltoid muscles. MRI does not use x-rays. It uses magnetic waves. It allows

the doctor to see your tissues and bones in thin slices.

Computed tomography angiography (CTA) is sometimes used to identify problems with the artery or vein within the quadrilateral space. Computed tomography uses special X-rays. The CTA requires that contrast dye be injected into a vein. Your arm will likely be in a throwing position while being scanned. Computed tomography also allows your doctor to see your bones and tissues in thin slices.

Some doctors do an axillary nerve block. The area of the axillary nerve is injected with a numbing medication like lidocaine. If the pain goes away when the nerve is numb, it is considered a *positive test*. This helps the doctor determine whether or not it is the axillary nerve causing your symptoms.

Treatment

What treatment options are available?

Nonsurgical Treatment

Most of the time, quadrilateral space syndrome will improve with nonsurgical treatment.

There are varying degrees of nerve injury. Most commonly, injury to the axillary nerve is a more mild form of an injury called *neuropraxia*. This means that it typically recovers fully. The axillary nerve is very short, so even a severe injury can heal rather quickly.

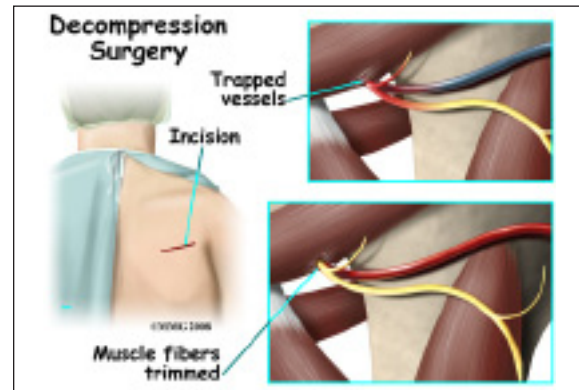
It is important to rest your shoulder. Your doctor may suggest taking a break from the activity that may be causing your symptoms. Changing throwing or sport mechanics may be helpful.

Anti-inflammatories (NSAIDs) such as ibuprofen or naprosyn may be suggested. Heat or cold packs to your shoulder may be beneficial.

Your doctor will likely prescribe physical therapy.

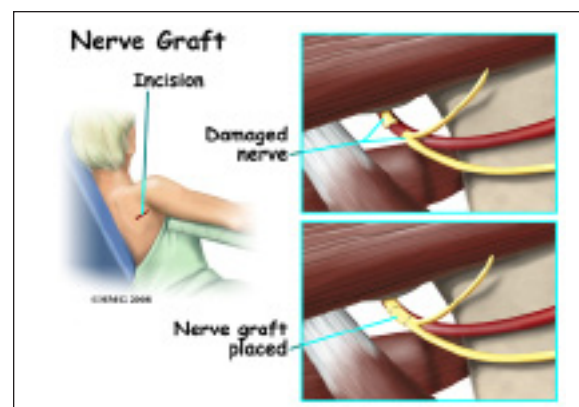
Surgery

If there is no improvement after six weeks of conservative care, surgery is usually recommended.



Bands of extra fibers in the quadrilateral space are usually what cause the compression of the axillary nerve or the small artery or vein. These bands of fibers are clipped or removed during surgery. This type of surgery is called *decompression*. It is quite effective.

Occasionally, after high-energy trauma, or during surgery, the axillary nerve will be over-stretched, or even cut. This type of injury is called *neurotomesis*. The axillary nerve may need to be repaired. The injured portion is replaced with another nerve. This is called a *nerve graft*.



Your surgeon will operate from the back of the shoulder, making a small incision. In the case of nerve grafting, there will be a small incision where the other portion of nerve is removed.

You will be allowed to go home the same day. Your arm will likely be in a sling.

Rehabilitation

Non-surgical Rehabilitation

Physical therapy is helpful for maintaining shoulder range of motion, or flexibility. Posture training may also be helpful. Your physical therapist or trainer may have you change the way you do your overhead sport when overuse is a problem. *Electrical muscle stimulation* (EMS) may be beneficial when there is muscle weakness or wasting. EMS is a battery operated device that sends electrical current to your muscles to make them contract. This will help maintain strength and decrease wasting of the muscle. There are units that can be used at home.

After about four weeks, you may be able to do more exercise on your own. Usually by six weeks, exercises specific to your sport are introduced. In most cases, you can expect to be pain free, have full range of motion, and be able to resume activity in 12 weeks.

Return to sports varies. Your doctor may want to have the EMG repeated monthly to see if the axillary nerve is improving. Improvement in the EMG should be seen. Near full recovery of deltoid muscle strength is recommended before return to your sport.

Most of the time, conservative care such as physical therapy is all that is needed. Return to activity is the goal of treatment. Rarely is surgery needed.

After Surgery

Most shoulder rehabilitation includes three phases.

Phase I is to limit pain, and allow range of motion at the shoulder. Gentle motion is started to keep scar tissue from forming again. This also keeps the nerve and blood vessels moving freely. During the first four weeks

after surgery, it is important not to overuse your arm. Working on posture may also be a part of your therapy.

Phase II includes gentle strengthening of the shoulder and upper extremity. Total body conditioning is also important. This often means riding a bike, walking on a treadmill, and even strengthening of the core muscles in your trunk.

Phase III is usually started six weeks after surgery. This includes sport specific activities, functional activities, and continued conditioning. Your physical therapist or trainer may have you change the way you do your overhead sport when overuse has been the problem.

Your doctor may want to have the EMG repeated at monthly intervals to see if the axillary nerve is improving, especially after surgery to graft the nerve. By twelve weeks, you should be pain free. You should have full range of motion of the shoulder. Return to sports varies. However, in general, it is recommended there be improvement in the EMG, and that the muscle strength of the operated shoulder is at least 80 percent of the muscle strength of nonoperated shoulder.

Notes