

## *A Patient's Guide to* **Arthritis**



©MMG 2005



**Alpine Physical Therapy**  
**Three Locations**  
**In North, South, and Downtown Missoula**  
**Missoula, MT 59804**  
**Phone: 406-251-2323 Fax: 406-251-2999**

# **Alpine** Alpine Physical Therapy *Physical Therapy*<sup>™</sup>



Thank you for taking the time to explore our web office. Discover all we have to offer. We hope you will find the time spent on our website rewarding and informative.

At Alpine Physical Therapy, we are dedicated to providing ways for those we serve to access the information needed to make informed decisions about healthcare in orthopedics and sports medicine.

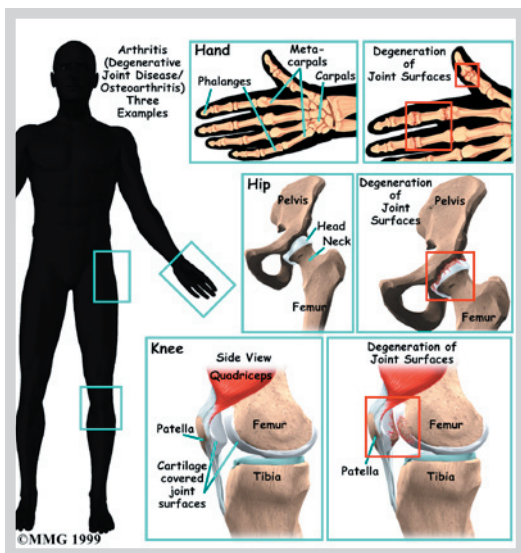
We encourage you to explore this site and learn more about our practice, our facilities, and your treatment options. Make the most of this informative section of our site. You will find educational materials to help you understand orthopedic problems and your best options for treatment.

Alpine Physical Therapy . . .

Change Life Through Movement!



Alpine Physical Therapy  
Three Locations  
In North, South, and Downtown Missoula  
Missoula, MT 59804  
Phone: 406-251-2323 Fax: 406-251-2999  
Info@AlpinePTmissoula.com  
<http://www.AlpinePTmissoula.com>



## What Is Arthritis?

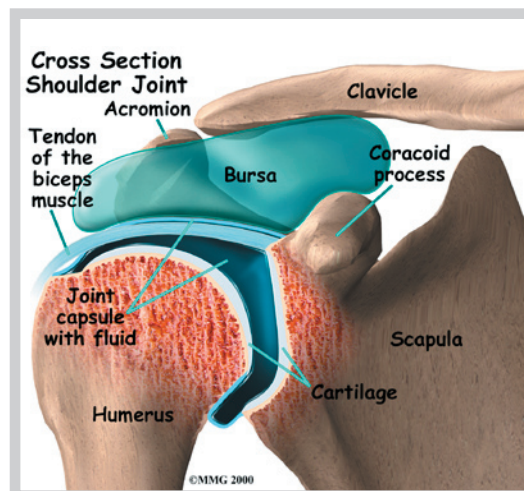
*Arthritis* means *inflammation of the joints*. Inflammation generally includes symptoms of redness, heat, swelling, and pain. Many different diseases can result in inflammation of the joints. Arthritis is therefore a general term that describes more than one hundred different diseases of the joints of your body.

In some types of arthritis, the cause of the disease is known, but in others it is still unknown. Some types of arthritis come on suddenly, and others develop slowly. Any joint can be affected, including your knees, hips, neck, shoulders, and fingers.

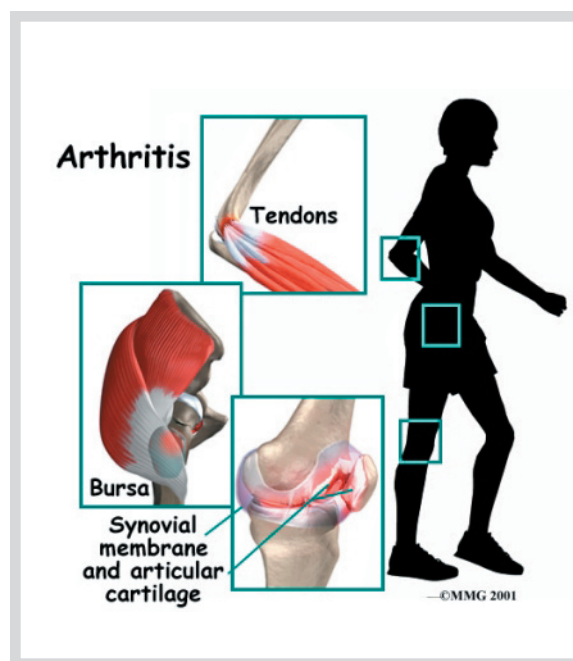
The diseases that cause arthritis can also attack muscle and connective tissue around joints. Some diseases may even damage other organs of the body, such as the kidneys, intestines, and heart. Because the diseases inflame the joints, most arthritic conditions and related diseases involve *chronic* (long-term) pain. Over time, they may cause increasing damage to the joints or soft tissues of your body.

Your joints are beautifully designed to minimize stress and damage while you move. Nearly all joints of the body are *synovial* joints. Most synovial joints occur where two

bones come together and must rub against one another to allow motion. Smooth, slick *articular cartilage* covers the end of the bones



so they don't rub together. *Synovial fluid* lubricates the joint. Around the joint, connective tissue forms a watertight sack that is called the *joint capsule*. Small, fluid-filled sacks, called *bursae*, cushion parts of the joint. *Ligaments* connect the bones together and *tendons* connect the muscles to bones. A problem with any one of these parts can lead to joint pain and inflammation—arthritis.



Many people of all ages suffer from arthritis. It is estimated that forty million Americans--

that's one in seven of us--have arthritis. Almost two-thirds of arthritis patients are women, but for some types of arthritis most sufferers are men.

Arthritis and related diseases are often painful to live with and difficult to treat. But your doctor can help you find treatment and pain management strategies that work for you. The method of treatment will vary depending on the specific disease.

## Notes