

## *A Patient's Guide to* **Collateral Ligament Injuries**



©MMG 2003



## Advanced Orthopedics and Sports Medicine Institute



Our goal is to help you be fully informed about your condition and how it affects your health. This section combined with our Patient Videos offers you a comprehensive overview of conditions and treatments.

Please remember, making an appointment and learning about your specific condition is the only way to insure your health and rehabilitation. The information provided here is downloadable so you can study it and write down questions to ask during your appointment.

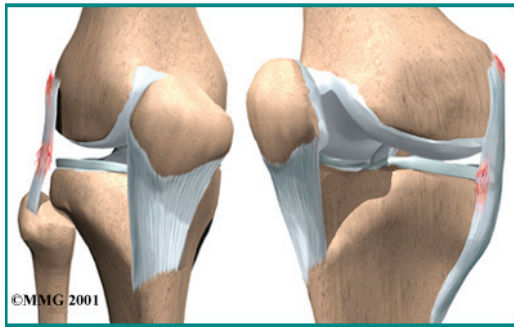
If you, or someone you know, need orthopedic help you are in the right place. Advanced Orthopedic Associates and Sports Medicine Institute sees hundreds of patients and only a small percentage ever require surgery.

Through education and understanding health can be restored to almost any condition and our Patient-Centered, Patient-Focused care is guaranteed to give you peace of mind throughout your treatment.



Advanced Orthopedics and Sports Medicine Institute  
Pond View Professional Park  
301 Professional View Drive  
Freehold, NJ 07728  
Phone: 732-720-2555  
info@aosminj.com  
<http://Advancedorthosports.com/>

## Collateral Ligament Injuries



### Introduction

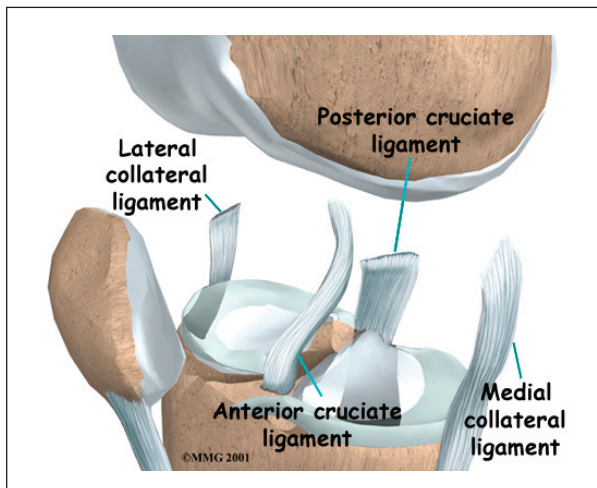
The *collateral ligaments* are commonly injured parts of the knee. An injury to these ligaments usually involves a significant force, such as a fall while skiing or a direct impact to the side of the leg.

This guide will help you understand

- where the collateral ligaments are located
- how a collateral ligament injury causes problems
- how doctors treat the condition

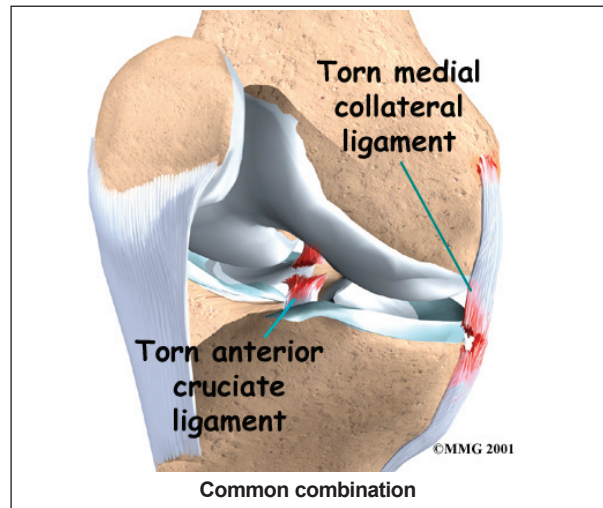
### Anatomy

Where are the collateral ligaments, and what do they do?

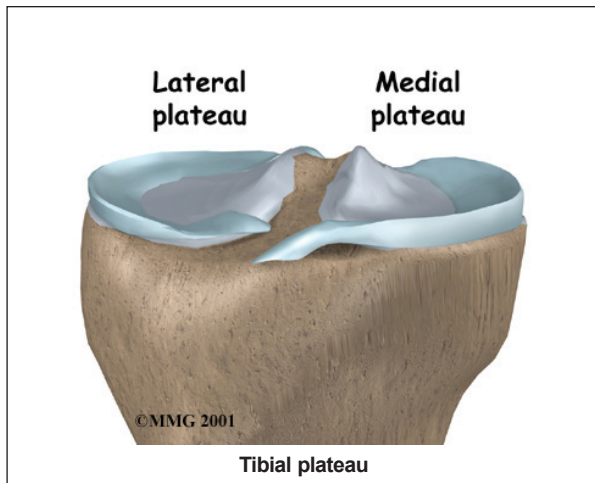


**Ligaments** are tough bands of tissue that connect the ends of bones together. There are two collateral ligaments, one on either side of the knee, that limit side to side motion of the knee. The *medial collateral ligament* (MCL) is found on the side of the knee closest to the other knee. The *lateral collateral ligament* (LCL) is found on the opposite side of the knee.

If an injury causes these ligaments to stretch too far, they may tear. The tear may occur in the middle of the ligament, or it may occur where the collateral ligament attaches to the bone, on either end. If the force from the injury is great enough, other ligaments may also be torn. The most **common combination** is a tear of the MCL and a tear of the *anterior cruciate ligament* (ACL). The ACL runs through the center of the knee and controls how far forward the shinbone (*tibia*) moves in relation to the thighbone (*femur*).



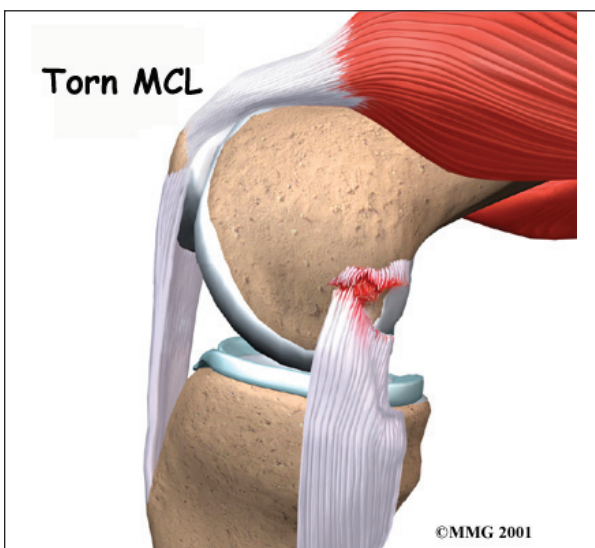
MCL tears are more common than LCL tears, but a torn LCL has a higher chance of causing knee instability. One reason for this is that the top of the shinbone (called the *tibial plateau*) forms a deeper socket on the side nearest the MCL. On the other side, near the LCL, the surface of the tibia is flatter, and the end of the shinbone can potentially slide around more. This difference means that a torn LCL is more likely to cause knee instability.



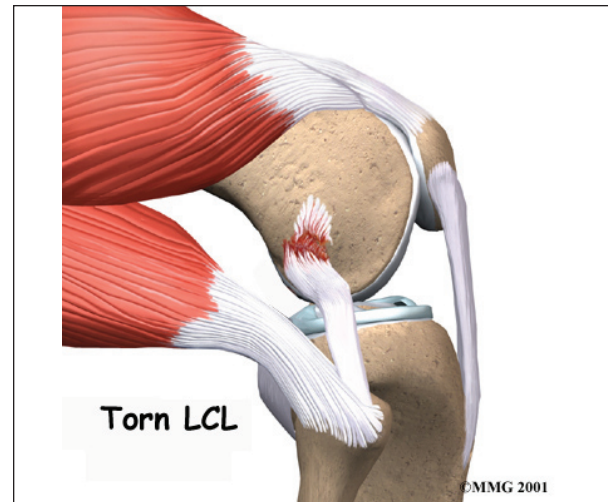
## Causes

How do collateral ligament injuries occur?

The collateral ligaments can be torn in sporting activities, such as skiing or football. The injury usually occurs when the lower leg is forced sideways, either toward the other knee (*medially*) or away from the other knee (*laterally*). A blow to the outside of the knee while the foot is planted can result in a tear of the MCL. Slipping on ice can cause the foot to move outward, taking the lower leg with it. The body weight pushing down causes an awkward and unnatural force on the whole leg, much like bending a green stick. The MCL may be torn in this instance because the force hinges the medial part of the knee open, putting stress on the MCL.



The LCL is most often injured when the knee is forced to hinge outward away from the body. It can also be torn if the knee gets snapped backward too far (*hyperextended*).



## Symptoms

How do collateral ligament injuries cause problems?

An injury violent enough to actually tear one of the collateral ligaments causes significant damage to the soft tissues around the knee. There is usually bleeding and swelling into the tissues surrounding the knee. The damage may also cause bleeding into the knee joint itself. The knee becomes stiff and painful. As the initial stiffness and pain subside the knee joint may feel unstable, and the knee may give way and not support your body weight.

Chronic, or long-term, instability due to an old injury to the collateral ligaments is a common problem. If the torn ligament heals but is not tight enough to support the knee, a feeling of instability will continue to be felt. The knee will give way at times and may be painful with heavy use.

## Diagnosis

How do doctors identify this problem?

The initial physical examination usually gives a very good indication of which ligaments have been torn in and around the knee. In



some cases, there is too much pain and muscle spasm to completely tell what is damaged in your knee. Your physician may suggest a period of rest with a knee splint and then reexamine the knee in five to seven days. This will allow some of the initial pain and spasm to decrease, and the exam may be more reliable.

X-rays may be required to rule out the possibility that any bones have been damaged. *Stress X-rays* may be useful to confirm that one of the collateral ligaments has been torn. Stress X-rays are plain X-rays taken with someone attempting to open the side of the joint that is suspected of being unstable. The X-rays will show a widening of the joint space on that side if instability is present.

*Magnetic resonance imaging (MRI)* may be ordered if there is evidence that multiple injuries have occurred, including injury to the ACL or *meniscus* (a special type of ligament in the knee joint). The MRI machine uses magnetic waves rather than X-rays to create pictures that look like slices of the knee.

This test does not require any needles or special dye and is painless. If there is uncertainty in the diagnosis following the history and physical examination, or if other injuries in addition to the collateral ligament tear are suspected, an MRI scan will probably be suggested.

## **Treatment**

How do doctors treat collateral ligament injuries?

### **Nonsurgical Treatment**

An isolated injury to the LCL or MCL rarely requires surgical repair or reconstruction. Partial tears to the LCL, such as Grade 1 or Grade II injury, are usually treated by reduced activity and allow the ligament healed with or without a brace for several weeks. Most doctors opt not to immobilize the knee in a cast when the MCL is torn. Some doctors

prefer to issue their patients a knee brace after the injury if there is significant pain and instability.

Initial treatments for a collateral ligament injury focus on decreasing pain and swelling in the knee. Rest and anti-inflammatory medications, such as aspirin, can help decrease these symptoms. You may need to use crutches until you can walk without a limp.

Most patients receive physical therapy treatments for collateral ligament injuries. Therapists may treat swelling and pain with the use of ice, electrical stimulation, and rest periods with your leg supported in elevation.

Exercises are used to help you regain normal knee movement. Range-of-motion exercises should be started right away with the goal of helping you swiftly regain full knee movement. This includes the use of a stationary bike, gentle stretching, and careful pressure applied to the joint by the therapist.

Exercises are also used to improve the strength of the *quadriceps* muscle on the front of the thigh. As your symptoms ease and strength improves, you will be guided through advancing stages of exercise.

When you get full knee movement, your strength is improving, and your knee isn't giving way, you'll be able to gradually get back to your work and sport activities. Some doctors prescribe the use of a *functional brace* for athletes who intend to return quickly to their sport. These braces support the knee and protect the collateral ligaments.

Patients who continue having periods of swelling or instability in the knee may need surgery to correct their problem.

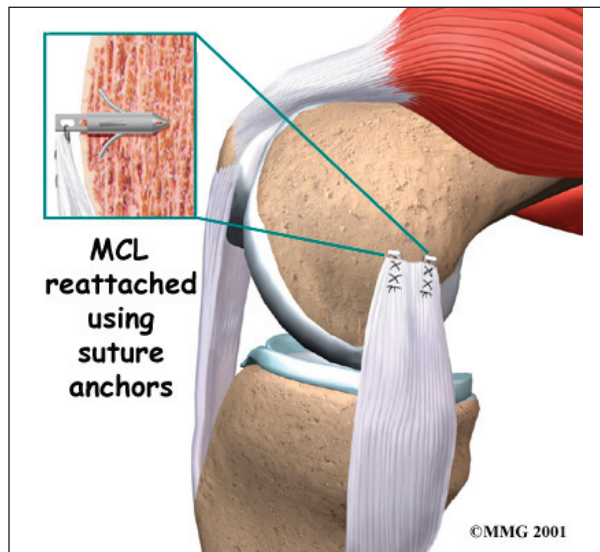
### **Surgery**

If other structures in the knee are injured, surgery may be required. Some surgeons feel that a combination of an ACL tear and an MCL tear should be treated surgically.

Others disagree and feel that the MCL tear should be treated nonsurgically at first and the ACL reconstructed later. Time will tell if one approach is better than the other.

### Ligament Repair

Repair of a recently torn collateral ligament usually requires an incision through the skin over the area where the tear in the ligament has occurred. If the ligament has been pulled from its attachment on the bone, the ligament is



reattached to the bone with either large sutures (strong stitches) or special staples called *suture anchors*. Tears of the middle areas of the ligament are usually repaired by sewing the ends together.

### Ligament Reconstruction

Chronic swelling or instability caused by a collateral ligament injury may require a surgical reconstruction. *Reconstruction* differs from repair of the ligaments, described earlier. A reconstruction operation usually works by either tightening up the loose ligament or replacing the loose ligament with a tendon graft.

### Ligament Tightening

In the tightening procedure, your surgeon will use the remaining ligament tissue and take

up the slack (similar to taking in the waist on a pair of pants). This is usually done by detaching one end of the ligament from its place on the bone and moving it so that it becomes tighter. The ligament is then reattached to the bone in the new place and held with sutures or metal staples.

### Autograft Method

If a tendon graft is needed to replace the loose ligament, it is usually taken from somewhere else in the same knee. Taking tissue from your own body is called an *autograft*. A common autograft that is used is one of the hamstring tendons called the *semitendinosus tendon*. Studies have shown that this tendon can be removed without affecting the strength of the leg. This is because other bigger and stronger hamstring muscles can take over the function of the tendon that is removed. In this operation, your surgeon will use the tendon graft to replace the damaged collateral ligament. The ends of the tendon graft are attached to the bone using large sutures or metal staples.

### Allograft Method

Another way to replace a badly torn collateral ligament is with an *allograft*. For this procedure, the surgeon gets graft tissue from a tissue bank. This tissue is usually removed from an organ donor at the time of death and sent to a tissue bank. There the tissue is checked for infection, sterilized, and stored in a freezer. When needed, the tissue is ordered by the surgeon and used to replace the torn collateral ligament.

## Rehabilitation

What should I expect after treatment?

### Nonsurgical Rehabilitation

Minor sprains of either the MCL or LCL should get better within four to six weeks. Moderate tears should rehabilitate within two months. Severe MCL tears require up to three months. If patients are still having problems after three months, they will likely need

surgery. Severe tears or ruptures of the LCL are the trickiest, because they tend to leave the knee joint the most unstable, and patients with this condition typically don't do well with nonsurgical care.

### **After Surgery**

Rehabilitation proceeds cautiously after surgery of the collateral ligaments, and treatments will vary depending on the type of surgical procedure that was used. Some surgeons have their patients use a *continuous passive motion* (CPM) machine after surgery to help the knee begin to move and to alleviate joint stiffness.

Most patients are prescribed a hinged knee brace to wear when they are up and about. Surgeons occasionally cast the leg after reconstruction surgery of the LCL.

Patients are strongly advised to follow the recommendations about how much weight to place on the leg while standing or walking. After a ligament repair, patients will be instructed to put little or no weight on their foot when standing or walking for up to six weeks. Weight bearing may be restricted for up to 12 weeks after a ligament reconstruction.

Patients usually take part in formal physical therapy after collateral ligament surgery. The first few physical therapy treatments are designed to help control the pain and swelling from the surgery. The goal is to help you regain full knee motion as soon as possible.

Physical therapists will also work with patients to make sure they are using crutches safely and only bearing the recommended amount of weight while standing or walking.

As the rehabilitation program evolves, more challenging exercises are chosen to safely advance the knee's strength and function.

Ideally, patients will be able to resume their previous lifestyle activities. Some patients may be encouraged to modify their activity choices, especially if an allograft procedure was used.

The physical therapist's goal is to help you keep your pain under control, ensure safe weight bearing, and improve your strength and range of motion. When you are well under way, regular visits to the therapist's office will end. Your therapist will continue to be a resource, but you will be in charge of doing your exercises as part of an ongoing home program.

## Notes