

A Patient's Guide to **Cervical Radiculopathy**



©MMG 2003

Glendale Adventist Medical Center
Spine Institute

 **Adventist Health**

Spine Institute
Glendale Adventist Medical Center
1500 E. Chevy Chase Drive, Suite 401B
Glendale, CA 91206
Phone: (818) 863-4444

Glendale Adventist Medical Center **Spine Institute**

Spine Institute

 **Adventist Health**



Glendale Adventist Medical Center
Spine Institute

 **Adventist Health**

Spine Institute
Glendale Adventist Medical Center
1500 E. Chevy Chase Drive, Suite 401B
Glendale, CA 91206
Phone: (818) 863-4444
AdventistHealth.org/Glendale/Spine

All materials within these pages are the sole property of Medical Multimedia Group, LLC and are used herein by permission. eOrthopod is a registered trademark of Medical Multimedia Group, LLC.



Introduction

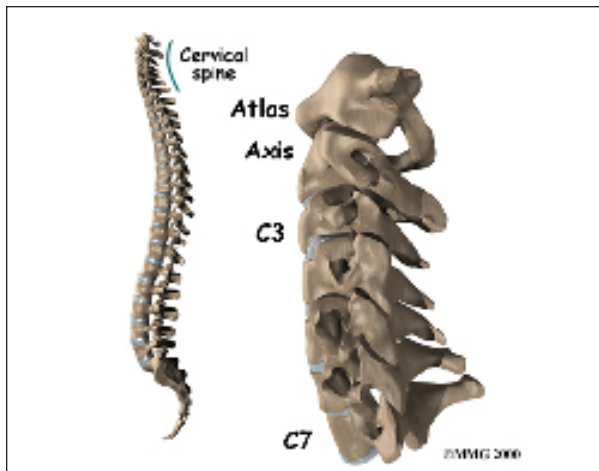
Neck pain has many causes. Mechanical neck pain comes from injury or inflammation in the soft tissues of the neck. This is much different and less concerning than symptoms that come from pressure on the nerve roots as they exit the spinal column. People sometimes refer to this problem as a pinched nerve. Health care providers call it *cervical radiculopathy*.

This guide will help you understand

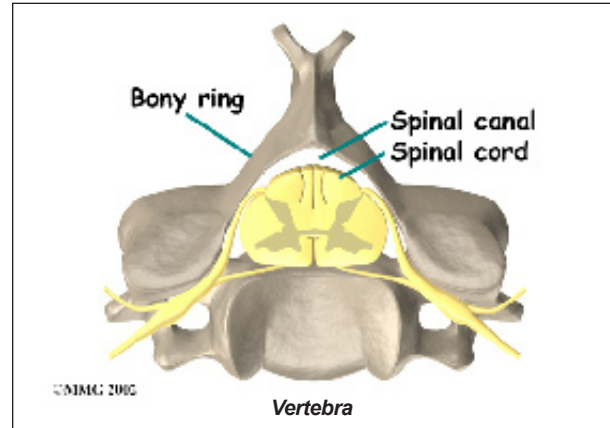
- how the problem develops
- how doctors diagnose the condition
- what treatment options are available

Anatomy

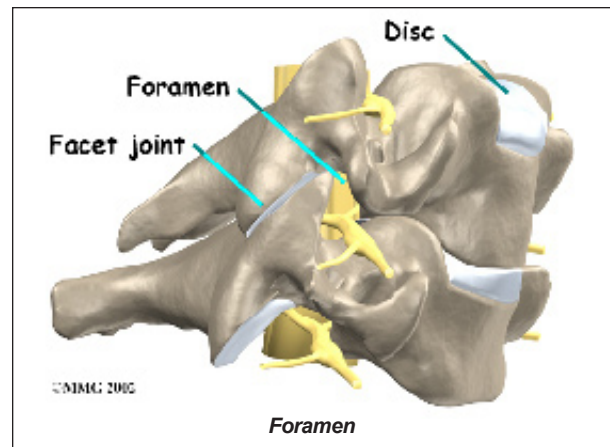
What part of the neck is involved?



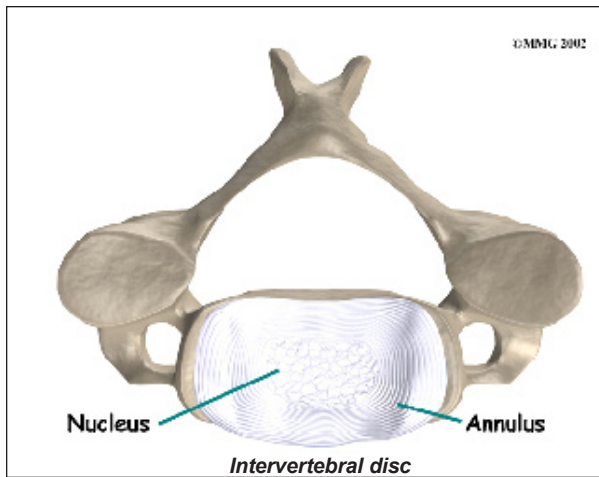
The spine is made of a column of bones. Each bone, or *vertebra*, is formed by a round block of bone, called a *vertebral body*. A bony ring attaches to the back of the vertebral body. When the **vertebra** bones are stacked on top of each other, the bony rings forms a long bony tube that surrounds and protects the spinal cord as it passes through the spine.



Traveling from the brain down through the spinal column, the spinal cord sends out nerve branches through openings on both sides of each vertebra. These openings are called the *neural foramina*. (The term used to describe a single opening is *foramen*.)



The *intervertebral disc* sits directly in front of the opening. A bulged or *herniated disc* can narrow the opening and put pressure on the nerve. A *facet joint* sits in back of the foramen. Bone spurs that form on the facet joint can project into the tunnel, narrowing the hole and pinching the nerve.



An intervertebral disc fits between the vertebral bodies and provides a space between the spine bones. The disc normally works like a shock absorber. An intervertebral disc is made of two parts. The center, called the *nucleus*, is spongy. It provides most of the shock absorption. The nucleus is held in place by the *annulus*, a series of strong ligament rings surrounding it. *Ligaments* are strong connective tissues that attach bones to other bones.

Causes

Why do I have this problem?

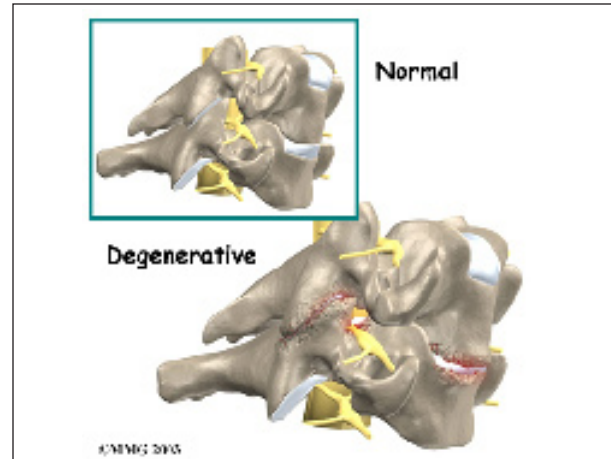
Cervical radiculopathy is caused by any condition that puts pressure on the nerves where they leave the spinal column. This is much different than mechanical neck pain. Mechanical neck pain is caused by injury or inflammation in the soft tissues of the neck, such as the discs, facet joints, ligaments, or muscles.

The main causes of cervical radiculopathy include degeneration, disc herniation, and spinal instability.

Degeneration

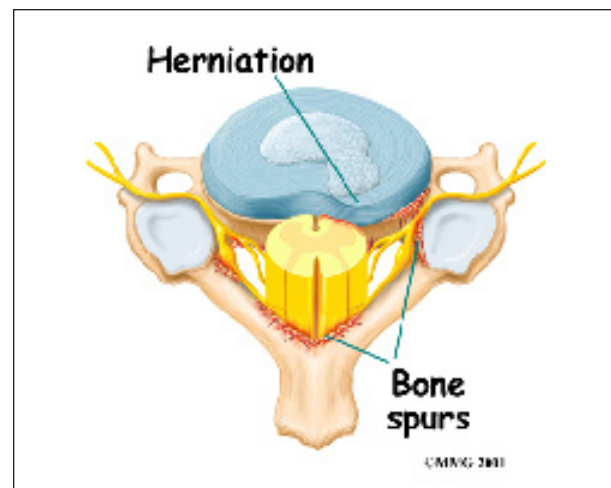
As the spine ages, several **changes occur** in the bones and soft tissues. The disc loses its water content and begins to collapse, causing the space between the vertebrae to narrow. The added pressure may irritate and inflame

the facet joints, causing them to become enlarged. When this happens, the enlarged joints can press against the nerves going to the arm as they try to squeeze through the neural foramina. Degeneration can also cause bone spurs to develop. Bone spurs may put pressure on nerves and produce symptoms of cervical radiculopathy.



Herniated Disc

Heavy, repetitive bending, twisting, and lifting can place extra pressure on the shock-absorbing nucleus of the disc. A blow to the head and neck can also cause extra pressure on the nucleus. If great enough, this increased pressure can injure the annulus (the tough, outer ring of the disc). If the annulus ruptures, or tears, the material in the nucleus can squeeze out of the disc. This is called a *herniation*.



Although daily activities may cause the nucleus to press against the annulus, the body is normally able to withstand these pressures. However, as the annulus ages, it tends to crack and tear. It is repaired with scar tissue. Over time, the annulus becomes weakened, and the disc can more easily herniate through the damaged annulus. If the herniated disc material presses against a nerve root it can cause pain, numbness, and weakness in the area the nerve supplies.

Spinal Instability

Spinal instability means there is extra movement among the bones of the spine. Instability in the *cervical spine* (the neck) can develop if the supporting ligaments have been stretched or torn from a severe injury to the head or neck. People with diseases that loosen their connective tissue may also have spinal instability. Spinal instability also includes conditions in which a vertebral body slips over the one just below it. When the vertebral body slips too far forward, the condition is called *spondylolisthesis*. Whatever the cause, extra movement in the bones of the spine can irritate or put pressure on the nerves of the neck, causing symptoms of cervical radiculopathy.

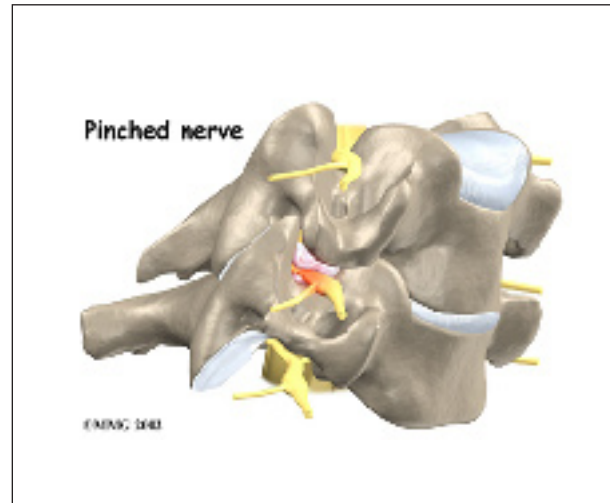
Symptoms

What does the condition feel like?

The symptoms from cervical radiculopathy are from pressure on an irritated nerve. These symptoms are not the same as those that come from mechanical neck pain. Mechanical neck pain usually starts in the neck and may spread to include the upper back or shoulder. It rarely extends below the shoulder. Headaches are also a common complaint of both radiculopathy and mechanical neck pain.

The pain from cervical radiculopathy usually spreads further down the arm than mechanical neck pain. And unlike mechanical pain, radiculopathy also usually involves other changes in how the nerves work such as

numbness, tingling, and weakness in the muscles of the shoulder, arm, or hand. With cervical radiculopathy, the reflexes in the muscles of the upper arm are usually affected. This is why doctors check reflexes when people have symptoms of cervical radiculopathy.



Diagnosis

How do doctors diagnose the problem?

Doctors gather the information about your symptoms as a way to determine which nerve is having problems. Diagnosis begins with a complete history of the problem. Your doctor will ask questions about your symptoms and how your problem is affecting your daily activities. Your answers can help your doctor determine which nerve is causing problems.

Next, the doctor examines you to see which neck movements cause pain or other symptoms. Your skin sensation, muscle strength, and reflexes are tested in order to tell where the nerve problem is coming from.

X-rays of the cervical spine can show the cause of pressure on the nerve. The images show whether degeneration has caused the space between the vertebrae to collapse. They may also show if a bone spur is pressing against a nerve.

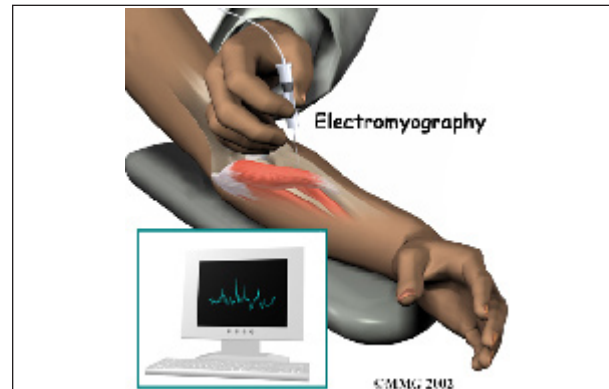


If more information is needed, your doctor may order *magnetic resonance imaging* (MRI). The MRI machine uses magnetic waves rather than X-rays to show the soft tissues of the body. This test gives a clear picture of the discs, nerves, and other soft tissues in the neck. The machine creates pictures that look like slices of the area your doctor is interested in. The test does not require any special dye or needles and is painless.

Sometimes it isn't clear where the nerve pressure is coming from. Symptoms of numbness or weakness can also happen when the nerve is being pinched or injured at other points along its path. (An example of this is pressure on the median nerve in the wrist, known as *carpal tunnel syndrome*.) Electrical studies of the nerves going from the neck to the arm may be requested by your doctor to see whether the nerve problem is in the neck or further down the arm. However, most doctors take X-rays and try other forms of treatment before ordering electrical tests. These tests are usually only needed when the diagnosis is not clear.

If your doctor orders electrical studies, several tests are available to see how well the nerves are functioning, including the *electromyography* (EMG) test. This test measures how long it takes a muscle to work once a nerve

signals it to move. The time it takes will be slower if nerve pressure from radiculopathy has affected the strength of the muscle.



Another electrical test that may be used instead of EMG is *cervical root stimulation* (CRS). This test involves putting a small needle through the back of the neck into the nerve where it leaves the spinal column. Readings of muscle action are then taken of the muscles on the front and back of the upper arm and along the inside of the lower arm. Doctors use the readings to determine which nerve is having problems.

Treatment

What treatment options are available?

Nonsurgical Treatment

Unless the nerve problem is getting worse rapidly, most doctors will begin with nonsurgical treatments.

At first, your doctor may prescribe immobilization of the neck. Keeping the neck still for a short time can calm inflammation and pain. This might include one to two days of bed rest and the use of a

soft neck collar. This collar is a padded ring that wraps around the neck and is held in place by a Velcro strap. Normally, a



patient need only wear a collar for one to two weeks. Wearing it longer tends to weaken the neck muscles.

Doctors prescribe certain types of medication for patients with cervical radiculopathy. Severe symptoms may be treated with narcotic drugs, such as codeine or morphine. But these drugs should only be used for the first few days or weeks after problems with radiculopathy start because they are addictive when used too much or improperly. Muscle relaxants may be prescribed to calm neck muscles that are in spasm. You may be prescribed anti-inflammatory medications such as aspirin or ibuprofen.

Some doctors have their patients work with a physical therapist. At first, treatments are used to ease pain and inflammation. Electrical stimulation treatments can help calm muscle spasm and pain. Traction is a way to gently stretch the joints and muscles of the neck. It can be done using a machine with a special head halter, or the therapist can apply the traction pull by hand.

Some patients are given an **epidural steroid injection** (ESI). The spinal cord travels in a tube within the bones of the spinal canal. The cord is covered by a material called *dura*. The space between the dura and the spinal column is the *epidural space*. It is thought that injecting steroid medication into this space

fight inflammation around the nerves, the discs, and the facet joints. In some cases, the steroid injection is given around one specific nerve. This is called a *selective nerve block*. The response to this treatment helps confirm which nerve root is causing the symptoms.

Doctors usually have their patients try nonoperative treatments for at least three months before considering surgery. But when patients simply aren't getting better, or if the problem is becoming more severe, surgery may be suggested.

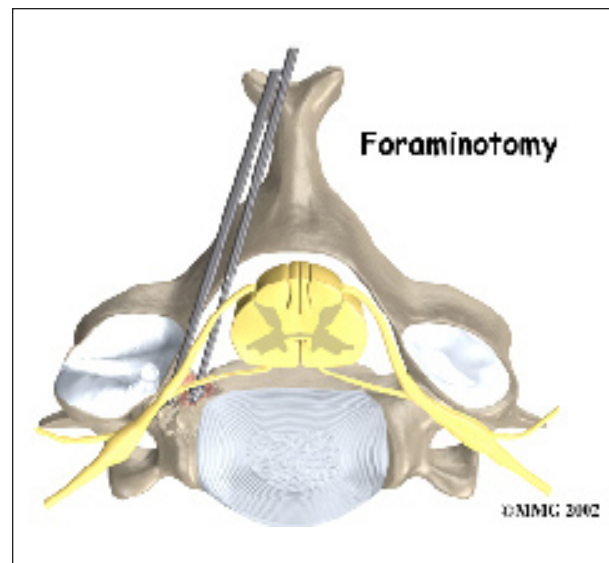
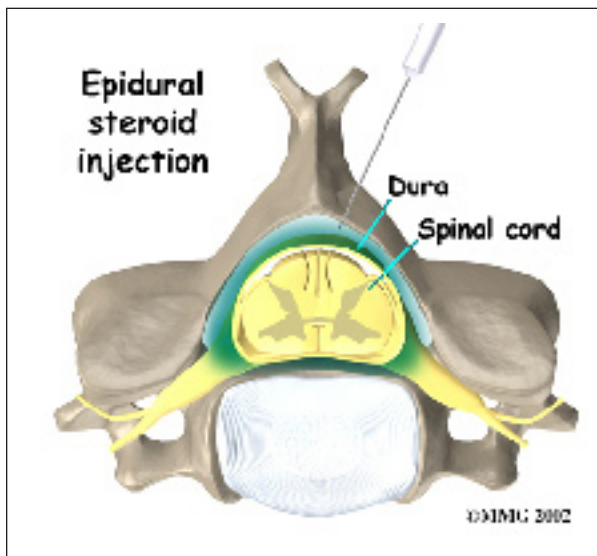
Surgery

Most people with cervical radiculopathy get better without surgery. In rare cases, people don't get relief with nonsurgical treatments. They may require surgery. There are several types of surgery for cervical radiculopathy. These include

- foraminotomy
- discectomy
- fusion

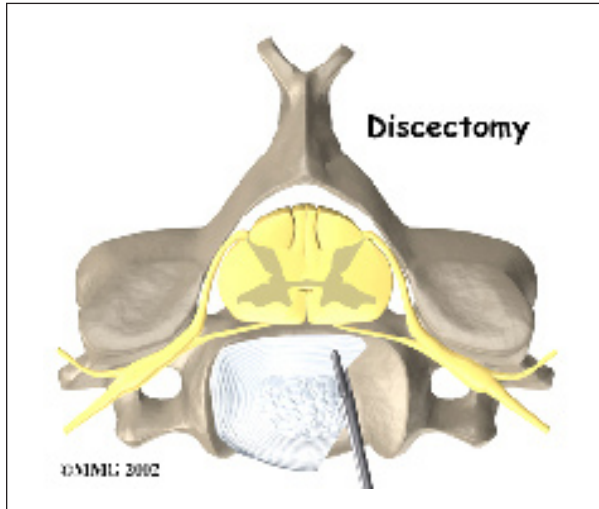
Foraminotomy

A *foraminotomy* is done to open the neural foramen and relieve pressure on the spinal nerve root. A **foraminotomy** may be done because of bone spurs or inflammation.



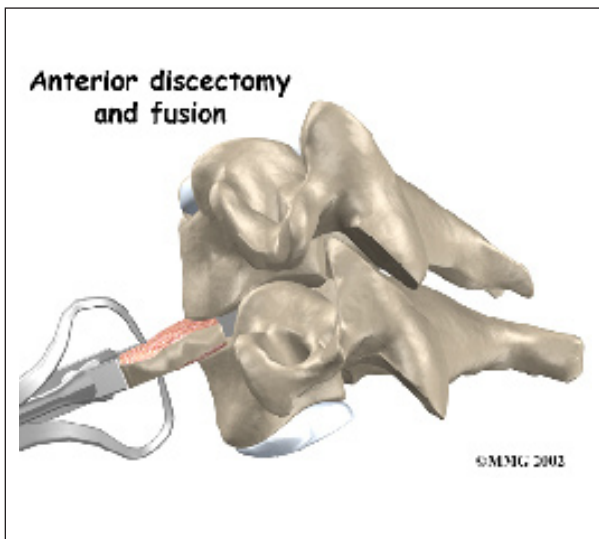
Discectomy

In a *discectomy*, the surgeon removes the disc where it is pressing against a nerve. Surgeons usually perform this surgery from the front (*anterior*) of the neck. This procedure is called *anterior cervical discectomy*. In most patients, discectomy is done together with a procedure called *cervical fusion*, which is described next.



Fusion

A fusion surgery joins two or more bones into one solid bone. The purpose for treating cervical radiculopathy with fusion is to increase the space between the vertebrae, taking pressure off the nerve. The surgery is most often done through the front of the neck.



After taking out the disc (discectomy), the disc space is filled in with a small block of bone graft. The bone is allowed to heal, fusing the two vertebrae into one solid bone. The space between the vertebrae is propped and held open by the bone graft, which enlarges the neural foramina, taking pressure off the nerve roots.

Rehabilitation

Nonsurgical Rehabilitation

What should I expect from treatment?

Even if you don't need surgery, your doctor may recommend that you work with a physical therapist. Patients are normally seen a few times each week for one to two months. In severe cases, patients may need a few additional weeks of care.

Your therapist creates a program to help you regain neck and arm function. Treatments for cervical radiculopathy often include neck traction, described earlier. Though neck traction is often done in the clinic, your therapist may give you a **traction device** to use at home.



It is very important to improve the strength and coordination in the neck and shoulder blade muscles. Your therapist can also evaluate

your workstation or the way you use your body when you do your activities and suggest changes to avoid further problems.

After Surgery

Rehabilitation after surgery for cervical radiculopathy can be a slow process. You will probably need to attend physical therapy sessions for six to eight weeks, and you should expect full recovery to take up to four months.

During physical therapy after surgery, your therapist may use treatments such as heat or ice, electrical stimulation, massage, and ultrasound to help calm pain and muscle spasm. Then you begin learning how to move safely with the least strain on the healing neck.

As the rehabilitation program evolves, you will do more challenging exercises. The goal is to safely advance your strength and function. As your therapy sessions come to an end, your therapist will help you with decisions about getting you back to work. Your therapist can do a work assessment to make sure you'll be able to do your job safely. Your therapist may

suggest changes that could help you work safely, with less chance of reinjuring your neck.



When your treatment is well under way, regular visits to the therapist's office will end. The therapist will continue to be a resource for you. But you will be in charge of doing your exercises as part of an ongoing home program.

Notes